

Office Measurements

Suite number:

101: 16' x 7'-7"

102: 16' x 9'-10"

103: 16' x 9'-6"

104: 19'-9" x 13'-10"

105: Xentelligence Inc.

106: 11'-9" x 9'-11"

107: Loyalist Security

108: 11'-9" x 10'

109: 11'-9" x 9'

110: 11'-8" x 9'

111: 11'-8" x 10'

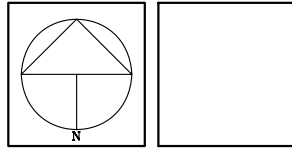
112: 15'-4" x 9'-7"

113: 15'-4" x 8'-11"

114: 11'-9" x 8'-11"

115: 11'-9" x 9'-7"

(Measurements are in Square Feet)



CLIENT:
Municipality of Port Hope

PROJECT: **IDEAHUB**
The Bridge and
Concept and Commerce

DRAWING TITLE:
GROUND FLOOR PLAN
260 Peter Street East
Port Hope

SCALE: DATE:

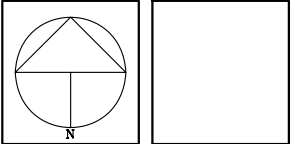
PROJECT NO.: DRAWING NO.:

1 GROUND FLOOR PLAN
A2.1 SCALE 1/8"=1'-0"



Office Measurements

- Suite number:
201: 23'-9" x 11'-11"
202: 11'-11" x 11'-8"
203: 11'-11" x 11'-8"
204: 11'-11" x 9'-9"
205: 11'-11" x 9'-10"
206: 25' x 25'
207: 25' x 25'
208: 15'-8" x 9'-10"
209: 19'-10" x 13'-8"
210: 20' x 11'-11"
211: 11'-11" x 11'-8"
212: 11'-11" x 19'-9"
(Measurements are in Square Feet)



CLIENT:
**MUNICIPALITY OF
 PORT HOPE
 56 QUEEN STREET
 PORT HOPE, ON L1A 3V9**

PROJECT:
**PORT HOPE
 BUSINESS
 INCUBATOR
 260 PETER STREET
 PORT HOPE, ONTARIO**

DRAWING TITLE:
**SECOND
 FLOOR PLAN**

SCALE: **AS NOTED** DATE: **NOV-2009**
 PROJECT NO.: **09.177** DRAWING NO.: **A2.2**

1 SECOND FLOOR PLAN
 A2.2 SCALE: NTS